

# DATAMARS *Livestock*<sup>TM</sup>



APRIL  
2022

**INJECTORS. ORAL DRENCHERS.  
TOPICAL APPLICATORS.  
ACCESSORIES. SERVICE KITS**

**njphillips.**  
DATAMARS

**Simcro.**  
DATAMARS

---

## A REPUTATION FOR ACCURACY AND USER EXPERIENCE

---

Over 80 years of heritage serving the animal health delivery systems and speciality packaging industry.

Simcro™ and NJ Phillips™ solutions are built on solid partnerships, genuine innovation and trusted ability to deliver. With a long history in pharmaceutical delivery our focus is on the future.

In recent times, pharmacological breakthroughs have become increasingly complex. They demand greater accuracy in the delivery device and ground-breaking protective and easy-to-use packaging and dispensing equipment.

The Simcro and NJ Phillips brands have proven capability in research, development and manufacturing of the world's most innovative delivery technologies.

We also know there's more to consider than simply delivering an unfailingly accurate dose. A focus on animal welfare, operator safety, treatment efficacy and user experience are the hallmarks of our products.



GUARDED INJECTORS	1
VS INJECTORS	3
REPEATER INJECTORS	5
FORWARD SELECTABLE INJECTORS	6
TUBE FED INJECTORS	7
BOTTLE MOUNT INJECTORS	9
MULTI-PURPOSE DEVICES	11
ORAL DRENCHERS	12
TOPICAL APPLICATORS	14
ACCESSORIES	15
SPARE PARTS KITS	18
DOSE SELECTION TYPES	23

# Sekurus™ Guarded Injector



The Sekurus injector is the result of an exhaustive development process spanning several years that included extensive field trials in several countries. Patented technologies include a two-stage activation mechanism and a self-tenting needle guard.

## PATENTED TWO-STAGE SAFETY MECHANISM

The patented two-stage mechanism is specifically designed for accurate penetration and consistent dose placement, either deep subcutaneous or intramuscular.

## PATENTED NEEDLE GUARD

The protective needle guard minimises the risk of needle stick related injuries, and enables the operator to delay the needle penetration until any animal movement has ceased.

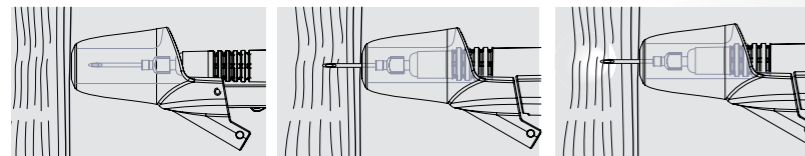
## ONE-HANDED SUBCUTANEOUS OR INTRAMUSCULAR INJECTION

Administering a one-handed injection is far easier and less hazardous for the operator than two-handed techniques, particularly in confined spaces such as a cattle chute. Sekurus was developed to ensure accurate single-handed subcutaneous or intramuscular drug placement. This allows the user to maintain a safer distance from the animal.



## Perpendicular Needle Guard

### THE LENGTH OF NEEDLE WILL JUDGE IF THE INJECTION IS INTRAMUSCULAR OR SUBCUTANEOUS



Needle remains protected until the trigger is activated. Dose is not administered until full needle penetration achieved. Dose is delivered at the desired needle length.

KIT CODE	BARREL SIZE	FILL TYPE	DOSE RANGE	DOSE INCREMENTS	DOSE TYPE (SEE PAGE 23)	KIT CONTENTS	KIT REF
850 0000-410	2 mL	Bottle Mount	0.1 - 2 mL	0.1 mL	20 Selectable Dose Stops	1x Device with Perpendicular Needle Guard and 100 mL Bottle Mount Shroud, 1x 30mm Bottle Mount Collar, 3x O-Rings, 1x Covered 16G x 3/4" D3 Detectable Needle, 1x Covered 16G x 1/2" Needle, 1x Needle Removal Tool	Spare Parts: 1 Accessories: 2, 13



# Accurus Guarded Injector



Our range of guarded injectors are the result of an exhaustive development process spanning several years which included extensive field trials in several countries.

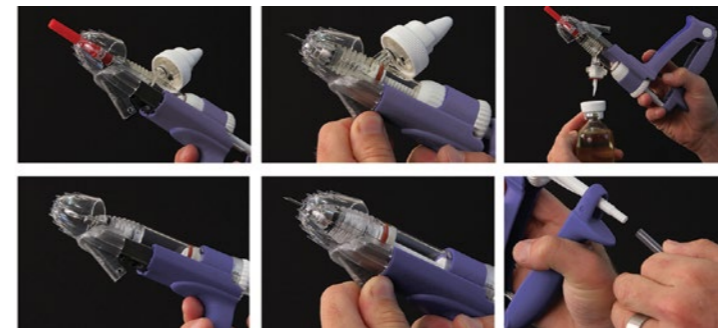
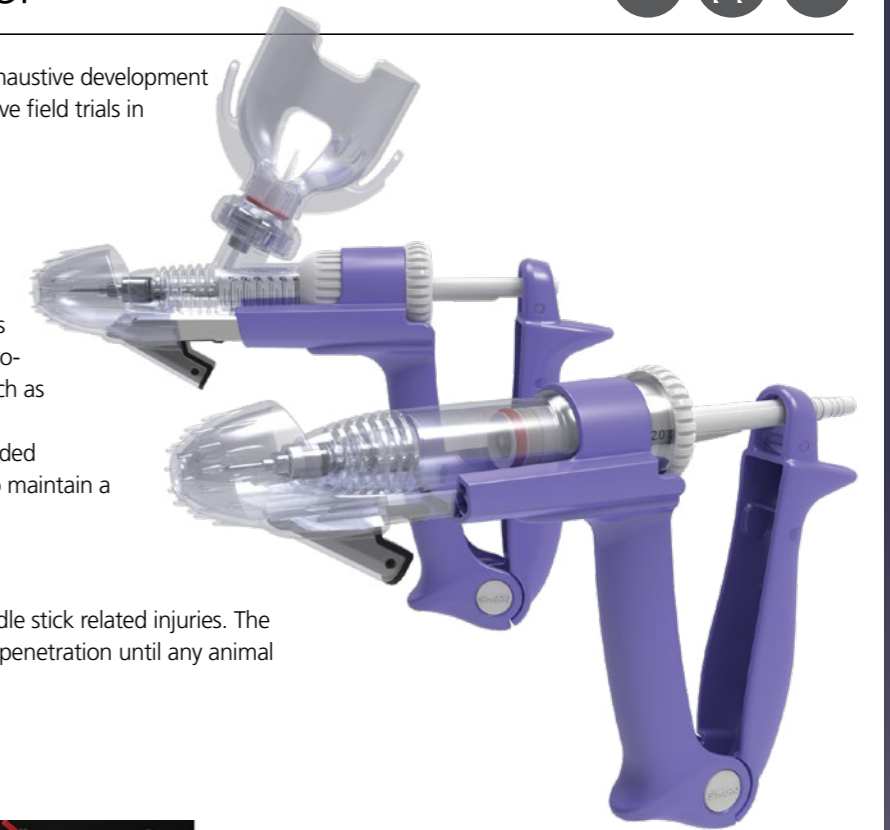
## ONE-HANDED SUBCUTANEOUS INJECTION

Administering a one-handed subcutaneous injection is far easier and less hazardous for the operator than two-handed techniques, particularly in confined spaces such as a cattle chute.

Accurus was developed to ensure accurate single-handed subcutaneous drug placement. This allows the user to maintain a safer distance from the animal.

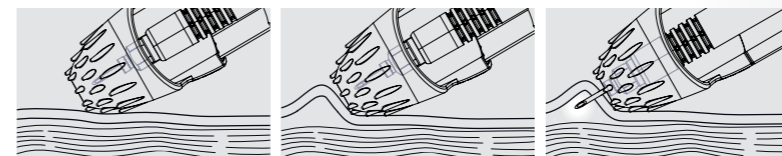
## PATENTED NEEDLE GUARD

The protective needle guard minimises the risk of needle stick related injuries. The needle guard allows the operator to delay the needle penetration until any animal movement has ceased.



## Self-Tenting Needle Guard

### SUBCUTANEOUS INJECTION



Spiked needle guard grips and tents the animal's skin. Dose is delivered at the correct subcutaneous location.

KIT CODE	BARREL SIZE	FILL TYPE	DOSE RANGE	DOSE INCREMENTS	DOSE TYPE (SEE PAGE 23)	KIT CONTENTS	KIT REF
850 0000-377	5 mL	Tube Fed	0.5 mL - 5 mL	0.5 mL	10 Forward Selectable Dose Stops	1x Device with Self-Tenting Needle Guard, 1x 4.7x1220mm Feed-Tube, 3x Draw-Offs (Small, Medium, Large), 3x O-Rings, 2x Covered 16G x 1/2" Needles, 1x Needle Removal Tool,	Spare Parts: 2 Accessories: 1, 13
850 0000-379	6 mL	Bottle Mount	1 mL - 6 mL	n/a	Variable Dose Stops	1x Device with Self-Tenting Needle Guard and 100 mL Bottle Shroud, 2x Bottle Mount Collars (20mm, 30mm) 3x O-Rings, 2x Covered 16G x 1/2" Needles, 1x Needle Removal Tool	Spare Parts: 3 Accessories: 2, 13
850 0000-378	12 mL	Tube Fed	2.5 - 12 mL	0.5 mL	20 Selectable Dose Stops	1x Device with Self-Tenting Needle Guard, 1x 4.7x1220mm Feed-Tube, 3x Draw-Offs (Small, Medium, Large), 3x O-Rings, 3x Spare Felt Washers, 2x Covered 16G x 1/2" Needles, 1x Needle Removal Tool	Spare Parts: 4 Accessories: 1, 13

# VS Injectors



Designed for swine and beef producers, the Simcro VS Injector gives you ultimate flexibility to protect you, your staff, your stock, and your business in one shot. The modular VS injector is designed for comfort, packed with safety features giving you the power to administer animal health vaccines, accurately, effectively and with care for your animals' welfare.

## COMPLIANCE

Complies to on-farm treatment protocols with the delivery of accurate, fixed dose volumes.

## OPERATOR SAFETY

Minimises accidental needle stick injuries with a lockable, needle guard

## FOOD SAFETY

Reduces needle breakage during injection with the use of a needle guard.

## FOOD QUALITY

Attachable ink stamp creates a visible mark around the injection site to check the injection is administered in the correct location.

## ANIMAL WELFARE

With a soft touch of the needle guard, the operator can delay needle penetration until the animal is settled.

## BIOSECURITY

Comply with on-farm hygiene regimes by disinfecting or boiling the injector.

## MODULAR SYSTEM

- Mix and match assembly to meet your situation for cattle and swine.
- Flexible tube fed or bottle mount injector options.
- Compatible with or without needle guard and ink stamps features.
- Reusable injector handle. Dose chambers in different sizes are available separately.

## ERGONOMIC DESIGN

Balanced injector with a two-stage trigger technique to reduce 'trigger finger' and provide a relaxed, comfortable grip for sustained use.

## IDENTIFICATION

Comes with coloured bands to match the injector and treatments to improve systematic process and comply with on-farm protocols.



KIT CODE	BARREL SIZE	FILL TYPE	DOSE TYPE (SEE PAGE 23)	KIT CONTENTS	KIT REF
850 0004-130	0.5 mL	Tube Fed	Fixed	1 x Device with 1" Needle Guard, 2 x Draw-Offs (small, medium), 4 x ID bands, 2 x Needle Attachment/Removal Tools	Spare Parts: 31, 33-42 Accessories: 14-19
850 0004-131	1.0 mL	Tube Fed	Fixed	1 x Device with 1" Needle Guard, 2 x Draw-Offs (small, medium), 4 x ID bands, 2 x Needle Attachment/Removal Tools	Spare Parts: 31, 33-42 Accessories: 14-19
850 0004-132	2 mL	Tube Fed	Fixed	1 x Device with 1" Needle Guard, 2 x Draw-Offs (small, medium), 4 x ID bands, 2 x Needle Attachment/Removal Tools	Spare Parts: 31-32, 34-42 Accessories: 14-19
850 0004-133	5.0 mL	Tube Fed	Fixed	1 x Device with 1.5" Needle Guard, 2 x Draw-Offs (small, medium), 4 x ID bands	Spare Parts: 31-32, 34-42 Accessories: 14-19
850 0004-134	0.5 mL	Bottle Mount	Fixed	1 x Device with 1" Needle Guard, 4 x ID bands, 2 x Needle Attachment/Removal Tools	Spare Parts: 31, 33-42 Accessories: 14-19
850 0004-135	1.0 mL	Bottle Mount	Fixed	1 x Device with 1" Needle Guard, 4 x ID bands, 2 x Needle Attachment/Removal Tools	Spare Parts: 31, 33-42 Accessories: 14-19
850 0004-136	2 mL	Bottle Mount	Fixed	1 x Device with 1" Needle Guard, 4 x ID bands, 2 x Needle Attachment/Removal Tools	Spare Parts: 31-32, 34-42 Accessories: 14-19
850 0004-137	5.0 mL	Bottle Mount	Fixed	1 x Device with 1.5" Needle Guard, 4 x ID bands	Spare Parts: 31-32, 34-42 Accessories: 14-19
850 0004-370	0.5 mL	Tube Fed	Fixed	1 x Precharged Device with 1" Needle Guard, 2 x Draw-Offs (small, medium), 4 x ID bands, 2 x Needle Attachment/Removal Tools	Spare Parts: 31, 33-42 Accessories: 14-19
850 0004-310	1.0 mL	Tube Fed	Fixed	1 x Precharged Device with 1" Needle Guard, 2 x Draw-Offs (small, medium), 4 x ID bands, 2 x Needle Attachment/Removal Tools	Spare Parts: 31, 33-42 Accessories: 14-19
850 0004-311	2 mL	Tube Fed	Fixed	1 x Precharged Device with 1" Needle Guard, 2 x Draw-Offs (small, medium), 4 x ID bands, 2 x Needle Attachment/Removal Tools	Spare Parts: 31-32, 34-42 Accessories: 14-19
850 0004-371	0.5 mL	Bottle Mount	Fixed	1 x Precharged Device with 1" Needle Guard, 4 x ID bands, 2 x Needle Attachment/Removal Tools	Spare Parts: 31, 33-42 Accessories: 14-19
850 0004-313	1.0 mL	Bottle Mount	Fixed	1 x Precharged Device with 1" Needle Guard, 4 x ID bands, 2 x Needle Attachment/Removal Tools	Spare Parts: 31, 33-42 Accessories: 14-19
850 0004-314	2 mL	Bottle Mount	Fixed	1 x Precharged Device with 1" Needle Guard, 4 x ID bands, 2 x Needle Attachment/Removal Tools	Spare Parts: 31-32, 34-42 Accessories: 14-19

## Ezi-Grip Repeater



- Highly durable made with high quality materials.
- Injector fills through the tip.
- Simple, precise dose selection with easy grip volume control.
- Easy to clean and maintain.
- Polysulfone barrel for durability.
- Ergonomic and robust metal handle supports use over long periods and reduces hand fatigue.



KIT CODE	BARREL SIZE	FILL TYPE	DOSE RANGE	DOSE INCREMENTS	BARREL TYPE	KIT CONTENTS	KIT REF
850 0003-985	25 mL	Draw-Up	0.5 - 2.5 mL	0.5 mL	Polysulfone	1x Device with Polysulfone Barrel, 1x Needle Hub Spanner, 3x Piston O-Rings, 1x Lubricant	Spare Parts: 5, 7, 8 Accessories: 4, 13
850 0000-423	50 mL	Draw-Up	1 - 5 mL	1 mL	Polysulfone	1x Device with Polysulfone Barrel, 1x Needle Hub Spanner, 3x Piston O-Rings, 1x Lubricant	Spare Parts: 6, 9, 10 Accessories: 4, 13

## Pistol Grip Repeater



- Simple, precise dose selection with easy grip volume control.
- Injector fills through the tip.
- Easy to clean and maintain.
- Built-in needle magazine saves you time.
- Ergonomic pistol grip design reduces hand strain.
- Comes with Polypropylene barrel for compatibility with broad range of products.
- Also fits Polysulfone Barrels. These can be purchased separately (Kits 8 & 10).



KIT CODE	BARREL SIZE	FILL TYPE	DOSE RANGE	DOSE INCREMENTS	BARREL TYPE	KIT CONTENTS	KIT REF
850 0004-023	25 mL	Draw-Up	0.5 - 2.5 mL	0.5 mL	Polypropylene	1x Device with Polypropylene Barrel, 1x Needle Hub Spanner, 3x O-Rings, 1x Lubricant	Spare Parts: 5, 7, 8 Accessories: 4, 13
850 0004-022	50 mL	Draw-Up	1 - 5 mL	1 mL	Polypropylene	1x Device with Polypropylene Barrel, 1x Needle Hub Spanner, 3x O-Rings, 1x Lubricant	Spare Parts: 6, 9, 10 Accessories: 4, 13



## Premium Forward Selectable Injector



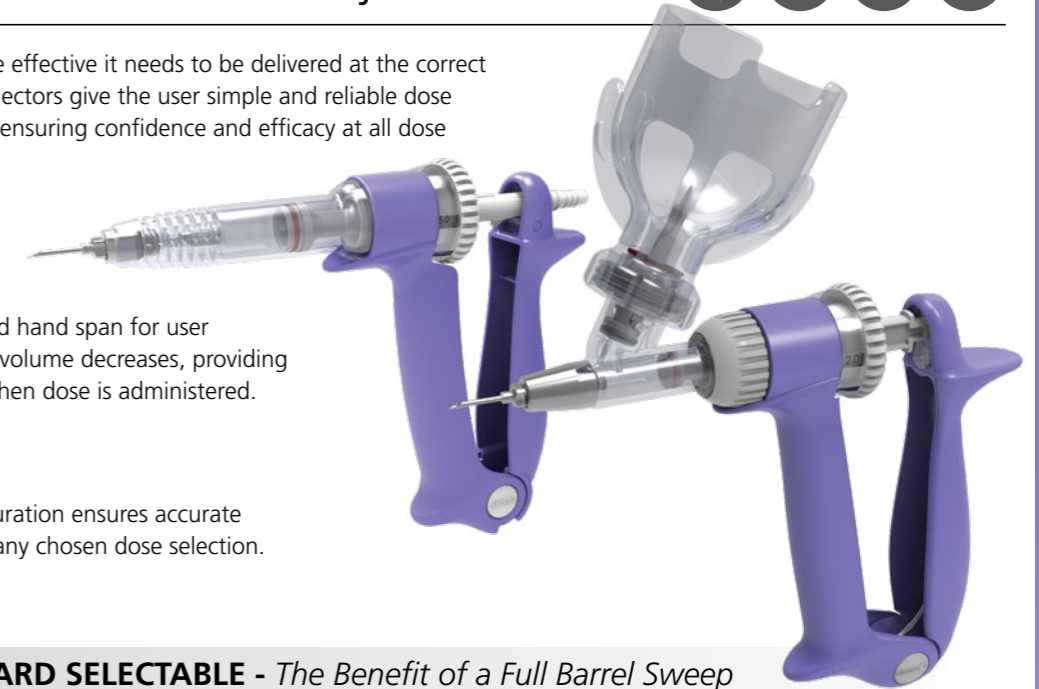
For an animal health treatment to be effective it needs to be delivered at the correct dose. Simcro's Forward Selectable Injectors give the user simple and reliable dose accuracy even at low dose volumes, ensuring confidence and efficacy at all dose settings.

### REDUCED FATIGUE

Ergonomically designed with reduced hand span for user comfort. Hand span reduces as dose volume decreases, providing better user feedback and comfort when dose is administered.

### SELECTABLE DOSE

The injector's improved valve configuration ensures accurate priming and dose administration at any chosen dose selection.



### FORWARD SELECTABLE - The Benefit of a Full Barrel Sweep

In addition to the other Forward Selectable Injector features, the Forward Selectable Injector uses a positive stroke, that displaces the entire contents of the barrel at any dose setting. This creates a positive feel for users, and ensures each dose is administered in full to ensure dose accuracy and maximum drug efficacy.



The key to efficacy is precision. At low doses, the plunger of a Reverse Selectable Injector is still acting on a full barrel of product. This makes air in the system difficult to purge, as air bubbles compress rather than get expelled out of the barrel. If these bubbles go unnoticed they can lead to multiple under doses being administered. The injector's Forward Selectable configuration reduces the chance of bubbles in the system and makes them easy to remove, ensuring dose accuracy and efficacy of the treatment.

KIT CODE	BARREL SIZE	FILL TYPE	DOSE RANGE	DOSE INCREMENTS	DOSE TYPE (SEE PAGE 23)	KIT CONTENTS	KIT REF
850 0000-416	0.5 mL	Bottle Mount	0.05 - 0.5 mL	0.05 mL	10 Forward Selectable Dose Stops	1x Device with 100 mL Bottle Mount Shroud, 3x O-Rings, 2x Covered 18G x 1/2" Needle	Spare Parts: 18 Accessories: 2, 3, 13
850 0000-417	2 mL	Bottle Mount	0.1 - 2 mL	0.1 mL	20 Forward Selectable Dose Stops	1x Device with 100 mL Bottle Mount Shroud, 2x Bottle Mount Collars (20mm, 30mm), 3x O-Rings, 2x Covered 16G x 1/2" Needles	Spare Parts: 19 Accessories: 2, 3, 13
850 0000-413	5 mL	Tube Fed	0.5 - 5 mL	0.5 mL	10 Forward Selectable Dose Stops	1x Device, 1x 4.7x1220mm Feed-Tube, 3x Draw-offs (Small, Medium, Large), 3x O-Rings, 2x Covered 16G x 1/2" Needles	Spare Parts: 15 Accessories: 1, 3, 13

**ALSO AVAILABLE - 5 mL Accurus Forward Selectable Tube Fed Injector (Page 2)**

# Metal Automatic Poultry Injector



**HIGHLY DURABLE**  
Made with high quality metal materials.

**POULTRY**  
Designed specifically for poultry with both a standard tube mount and a bottle spear and feed tube that allows the user to inject more remotely.

**VARIABLE DOSE ADJUSTMENT**  
Allows easy, flexible dose.

**ERGONOMIC DESIGN**  
Finger grip design supports use over long periods and reduces hand fatigue.

**EASY TO MAINTAIN**  
Product pack comes with major service kit.



KIT CODE	BARREL SIZE	FILL TYPE	DOSE RANGE	DOSE INCREMENTS	DOSE TYPE (SEE PAGE 23)	KIT CONTENTS	KIT REF
850 0003-964	0.5 mL	Tube Fed	0.1 - 0.5 mL	n/a	Variable Nut Lock Dose Stops	1x Metal Device, 1x Draw-Off Feed Tube & Bottle Spear, 1x Major Service Kit, 1x Needle Hub Spanner, 1x Needle Nut, 1x Lubricant	Spare Parts: 11 Accessories: 1, 13

# Metal Automatic Tube Fed Injector



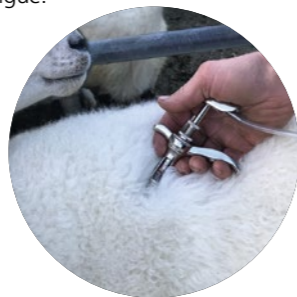
**HIGHLY DURABLE**  
Made with high quality materials.

**FEED TUBE CONNECTIONS**  
The tube connection will accommodate 4.8 mm feed tubes.

**HIGHLY DURABLE DOSE DELIVERY**

**VARIABLE DOSE ADJUSTMENT**  
Allows easy, flexible dose with a positive dose locking mechanism.

**ERGONOMIC DESIGN**  
Finger grip design supports use over long periods and reduces hand fatigue.



KIT CODE	BARREL SIZE	FILL TYPE	DOSE RANGE	DOSE INCREMENTS	DOSE TYPE (SEE PAGE 23)	KIT CONTENTS	KIT REF
850 0003-968	2 mL	Tube Fed	0.5 - 2 mL	n/a	Variable Nut Lock Dose Stops	1x Metal Device, 1x 4.8 x 800mm Feed Tube, 1x Needle Hub Spanner, 1x Needle Nut, 3x O-Rings, 1x Lubricant	Spare Parts: 12 Accessories: 1, 13
850 0003-969	5 mL	Tube Fed	0.5 - 5 mL	n/a	Variable Nut Lock Dose Stops	1x Metal Device, 1x 4.8 x 800 mm Feed Tube, 1x Needle Hub Spanner, 1x Needle Nut, 3x O-Rings, 3x Washers, 3x Washer Supports, 1x Lubricant	Spare Parts: 13 Accessories: 1, 13

# Premium Tube Fed Injector



**QUICK SET DOSE SELECTOR**  
Simple, precise dose selection with easy grip volume control.

**FEED TUBE CONNECTIONS**  
The tube connection will accommodate both 4.7 mm and 6.4 mm feed tubes.

**ERGONOMIC HANDLE**  
The handle is designed for operator comfort with a textured non-slip finish providing reduced hand fatigue when used over extended periods of time.



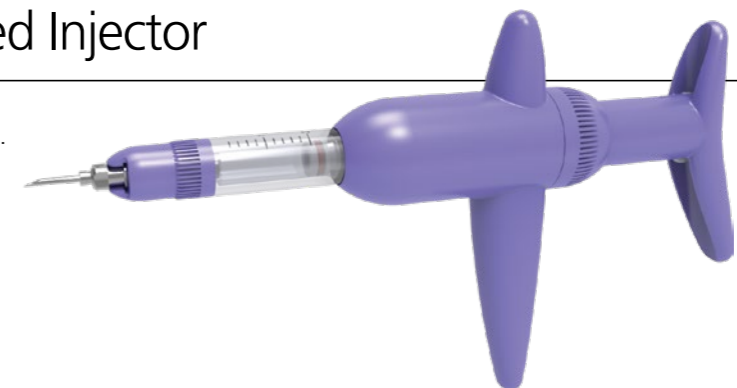
**12 ML PREMIUM HI-VISCOSITY INJECTOR**  
The Hi-Viscosity injector is designed to accurately administer problematic and viscous formulations even at very cold temperatures.

KIT CODE	BARREL SIZE	FILL TYPE	DOSE RANGE	DOSE INCREMENTS	DOSE TYPE (SEE PAGE 23)	KIT CONTENTS	KIT REF
850 0000-412	2 mL	Tube Fed	0.1 - 2 mL	0.1 mL	20 Selectable Dose Stops	1x Device, 1x 4.7x1220mm Feed-Tube, 3x Draw-offs (Small, Medium, Large), 3x O-Rings, 2x Covered 16G x 1/2" Needles	Spare Parts: 14 Accessories: 1, 3, 13
850 0000-413	5 mL	Tube Fed	0.5 - 5 mL	0.5 mL	10 Forward Selectable Dose Stops	1x Device, 1x 4.7x1220mm Feed-Tube, 3x Draw-offs (Small, Medium, Large), 3x O-Rings, 2x Covered 16G x 1/2" Needles	Spare Parts: 15 Accessories: 1, 3, 13
850 0000-414	12 mL	Tube Fed	2.5 - 12 mL	0.5 mL	20 Selectable Dose Stops	1x Device, 1x 6.4 x 1500 mm Feed Tube, 3x Hi-Flow Draw-offs (Small, Medium, Large), 3x O-Rings, 3x Felt Washers, 2x Covered 16G x 1/2" Needles	Spare Parts: 16 Accessories: 1, 3, 13

# Compact Tube Fed Injector



- Proven, reliable and durable design.
- Flexible variable dose selection.



KIT CODE	BARREL SIZE	FILL TYPE	DOSE RANGE	DOSE INCREMENTS	DOSE TYPE (SEE PAGE 23)	KIT CONTENTS	KIT REF
850 0000-406	2 mL	Tube Fed	0.2 - 2 mL	n/a	Variable Dose Stops	1x Device, 1x 4.7 x 1220mm Feed Tube, 3x Vented Draw-offs (Small, Medium, Large), 3x O-Rings, 2x Covered 16G x 1/2" Needles	Spare Parts: n/a Accessories: 1, 3, 13
850 0000-407	5 mL	Tube Fed	0.5 - 5 mL	n/a	Variable Dose Stops	1x Device, 1x 4.7 x 1220mm Feed Tube, 3x Vented Draw-offs (Small, Medium, Large), 3x O-Rings, 2x Covered 16G x 1/2" Needles	Spare Parts: n/a Accessories: 1, 3, 13

# Metal Automatic Bottle Mount Injector



## FULL BOTTLE SHROUD

100 mL bottle shroud provides greater stability to product bottle. Kits also include small, medium and large bottle adaptors.

## HIGHLY DURABLE

Made with high quality materials.

## VARIABLE DOSE ADJUSTMENT

Allows easy, flexible dose with a positive dose locking mechanism.

## ERGONOMIC DESIGN

Finger grip design supports use over long periods and reduces hand fatigue.

## HIGHLY ACCURATE DOSE DELIVERY



KIT CODE	BARREL SIZE	FILL TYPE	DOSE RANGE	DOSE INCREMENTS	DOSE TYPE (SEE PAGE 23)	KIT CONTENTS	KIT REF
850 0003-967	2 mL	Bottle Mount	0.1 - 2 mL	n/a	Variable Nut Lock Dose Stops	1x Metal Device with 100 mL Bottle Mount Shroud, 3x Bottle Mount Caps (20mm, 30mm, 33mm), 1x Needle Hub Spanner, 1x Needle Nut, 3x O-Rings, 1x Lubricant	Spare Parts: 12 Accessories: 3, 13
850 0003-980	5 mL	Bottle Mount	0.5 - 5 mL	n/a	Variable Nut Lock Dose Stops	1x Metal Device with 100 mL Bottle Mount Shroud, 3x Bottle Mount Caps (20mm, 30mm, 33mm), 1x Needle Hub Spanner, 1x Needle Nut, 3x O-Rings, 1x Lubricant	Spare Parts: 17 Accessories: 3, 13

# Premium Bottle Mount Injector



## SIMPLE, PRECISE DOSE SELECTION

Ensures accurate priming and dose administration.

## VARIABLE DOSE

Allows easy, flexible dose.

## ERGONOMIC DESIGN

Provides comfortable grip, tactile feedback and reduced fatigue over extended periods of time.

## ADJUSTABLE BARREL

Allows the bottle angle to be orientated for all operator dosing styles, particularly in confined spaces such as cattle chutes.



KIT CODE	BARREL SIZE	FILL TYPE	DOSE RANGE	DOSE INCREMENTS	DOSE TYPE (SEE PAGE 23)	KIT CONTENTS	KIT REF
850 0000-416	0.5 mL	Bottle Mount	0.05 - 0.5 mL	0.05 mL	10 Forward Selectable Dose Stops	1x Device with 100 mL Bottle Mount Shroud, 3x O-Rings, 2x Covered 18G x 1/2" Needle	Spare Parts: 18 Accessories: 2, 3, 13
850 0000-417	2 mL	Bottle Mount	0.1 - 2 mL	0.1 mL	20 Forward Selectable Dose Stops	1x Device with 100 mL Bottle Mount Shroud, 2x Bottle Mount Collars (20mm, 30mm), 3x O-Rings, 2x Covered 16G x 1/2" Needles	Spare Parts: 19 Accessories: 2, 3, 13
850 0000-418	6 mL	Bottle Mount	0.5 - 6 mL	n/a	Variable Dose Stops	1x Device with 100 mL Bottle Mount Shroud, 2x Bottle Mount Collars (20mm, 30mm), 3x O-Rings, 2x Covered 16G x 1/2" Needles	Spare Parts: 20 Accessories: 2, 3, 13

## ADJUSTABLE BARREL POSITION

The Simcro Bottle Mount Injector barrels can be rotated before use by loosening Barrel Band. This allows Barrel to be locked into a different position that may be more comfortable and convenient.



# Ultimate BMV™ Bottle Mount Injector



- Accurately delivers all dose volumes with an easy-to-use dose selector.
- Textured handset for greater grip, for comfort and control.
- Suitable for small vaccine pillow packs and bottles with no need to connect tubing.
- Bottle Mount can be rotated 360° ensuring bottle remains in vertical priming position.
- Easily dismantled for cleaning and re-lubrication.
- 30 mm and 33 mm Ultimate BMV bottle adapters sold separately.



KIT CODE	BARREL SIZE	FILL TYPE	DOSE RANGE	DOSE INCREMENTS	DOSE TYPE	KIT CONTENTS	KIT REF
850 0000-454	2 mL	Bottle Mount	0.2 - 2 mL	0.2 mL	Variable Dose Stops	1x Device	Spare Parts: 21 Accessories: 5, 6, 13
850 0000-455	6 mL	Bottle Mount	0.5 - 6 mL	0.5 mL	Variable Dose Stops	1x Device	Spare Parts: 22 Accessories: 5, 6, 13

# BMV™ Bottle Mount Injector



- Compact and reliable design.
- Easy attachment and detachment of needles.
- Ability to adjust barrel position.



KIT CODE	BARREL SIZE	FILL TYPE	DOSE RANGE	DOSE INCREMENTS	DOSE TYPE (SEE PAGE 23)	KIT CONTENTS	KIT REF
850 0000-456	0.5 mL	Bottle Mount	0.1 - 0.5 mL	n/a	Variable Dose Stops	1x Device	Spare Parts: 23 Accessories: 7, 8, 13
850 0000-457	2 mL	Bottle Mount	0.2 - 2 mL	n/a	Variable Dose Stops	1x Device	Spare Parts: n/a Accessories: 7, 8, 13



# Optimiser™ Multi Kit



Designed to offer an all-in-one solution

## ALL-IN-ONE PRODUCT

Product kit comes with accessories for the farmer to drench orally, vaccinate or treat topically.

## OPERATOR COMFORT

Designed for operator comfort, the Optimiser is proven in reliability and durability.

## ACCURACY

Delivers accurate dose volumes with easy to use dose selector.



KIT CODE	BARREL SIZE	FILL TYPE	DOSE RANGE	DOSE INCREMENTS	DOSE TYPE (SEE PAGE 23)	KIT CONTENTS	KIT REF
850 0004-021	15 mL	Tube Fed	1 mL - 15 mL	Dose increments vary: 0.5 mL increments from 1 - 10 mL 1 mL increments from 10 - 15 mL	24 Selectable Dose Stops	1x Device, 1x 6.4x1500mm Feed Tube, 3x Draw-offs (Small, Medium, Large), 3x O-Rings, 3x Felt Washers, 2x Covered 16G x 1/2" Needles, 1x 15mL Drench Barrel, 1x 86 mm Metal Oral Drench Nozzle, 1x 57 mm Straight Plastic Nozzle, 1x T-Bar Pour-on Nozzle	Spare Parts: 24 Accessories: 3, 10, 11, 13

# Oral & Pour-On Applicator



Multi-use device designed for topical and oral product application

## ERGONOMIC DESIGN

Provides comfortable grip, tactile feedback and reduced fatigue over extended periods of time.

## VARIABLE DOSE OPTIONS

Ensures accurate priming and dose administration at any chosen dose selection.

## FEED TUBE

The feed tube included in 30 mL device kit is highly chemically compatible with a range of animal health products.



KIT CODE	BARREL SIZE	FILL TYPE	DOSE RANGE	DOSE INCREMENTS	DOSE TYPE (SEE PAGE 23)	KIT CONTENTS	KIT REF
850 0000-382	20 mL	Tube Fed	1 - 20 mL	n/a	Variable Dose Stops	1x Device with 100 mm Metal Oral Nozzle, 1 x 63 mm Pour-On Nozzle, 1x T-Bar Pour-On Nozzle, 3x O-Rings, 3x Felt Washers, 1x 6.4 x 1500mm Feed Tube, 2x Anti-Kink Springs	Spare Parts: 25 Accessories: 9, 10, 11, 13
850 0000-383	30 mL	Tube Fed	4 - 30 mL	n/a	Variable Dose Stops	1x Device with 100 mm Metal Oral Nozzle, 1 x 63 mm Pour-On Nozzle, 1x Fan-Spray Nozzle, 1x 6.4 x 1200 mm Feed Tube, 2x Anti-Kink Springs, 3x O-Rings, 3x Felt Washers	Spare Parts: 26 Accessories: 9, 10, 11, 13

# Ultimate BMV™ Drencher



Drencher specifically for drenching swine

## PROVEN, RELIABLE AND DURABLE DESIGN

### BOTTLE COLLARS

24 mm and 28 mm bottle collars included in product kit to accommodate different sized pharmaceutical bottles.

### EASY TO USE DOSE SELECTOR

### HANDLE DESIGNED WITH TEXTURED NON-SLIP FINISH

For greater grip.



KIT CODE	BARREL SIZE	FILL TYPE	DOSE RANGE	DOSE INCREMENTS	DOSE TYPE	KIT CONTENTS	KIT REF
850 0004-020	2 mL	Bottle Mount	0.2 - 2 mL	0.2, 0.4, 0.5, 0.6, 0.8, 1.0, 1.2, 1.4, 1.5, 1.6, 1.8, 2.0 mL	12 Selectable Dose Stops	1x Device with 57mm Straight Nozzle, 1x 24 mm Bottle Mount Collar, 1x 28 mm Bottle Mount Collar, 3x O-Rings	Spare Parts: n/a Accessories: 1, 13

# High Flow Oral Drencher



## ECONOMICAL AND COMPATIBLE

An economical and durable drencher for use with most oral applications.

## OPERATOR COMFORT

Designed for operator comfort with a lightweight, ergonomic handle and lever.

## ACCURACY

Delivers reliable and accurate dose volumes with easy to use dose selector.

## CLEANING AND MAINTENANCE

Retaining clip allows easy access for cleaning and maintenance.

Operator comfort with lightweight and strong ergonomic handle and lever.

## QUICKER REFILL

High flow valve allow for quicker refill times.



KIT CODE	BARREL SIZE	FILL TYPE	DOSE RANGE	DOSE INCREMENTS	DOSE TYPE	KIT CONTENTS	KIT REF
850 0003-975	25 mL	Tube Fed	1 - 25 mL	n/a	Variable Dose Stops	1x Device with Metal Nozzle, 1x Feed-tube	Spare Parts: n/a Accessories: 10, 11, 13





## 20 mL Metal Oral Drencher



Popular drencher for cattle and sheep farmers.

### HIGHLY DURABLE

High quality metal drencher.

### VARIABLE DOSE ADJUSTMENT

Allows easy, flexible dose.

### ERGONOMIC DESIGN

Provides comfortable grip, tactile feedback and reduced fatigue over extended periods of time.

### CHEMICAL RESISTANT

Highly chemical resistant cylinder with moulded graduations.



**ALSO AVAILABLE: 20 mL Drencher + 2.5 Litre Backpack**  
Kit No. 850 0003-974

KIT CODE	BARREL SIZE	FILL TYPE	DOSE RANGE	DOSE INCREMENTS	DOSE TYPE (SEE PAGE 23)	KIT CONTENTS	KIT REF
850 0003-961	20 mL	Tube Fed	1 - 20 mL	n/a	Variable Dose Stops	1x Metal Device with 110 mm Metal Nozzle, 1x 9.6 x 1500mm Feed-Tube, 2x Feed-Tube Springs, 1x Feed-Tube Adaptor Kit, 3x O-Rings, 3x Washers, 1x Lubricant	Spare Parts: 28, 29 Accessories: 10, 11, 12, 13

## 8 mL Metal Lamb Drencher



### HIGHLY DURABLE

Highly durable robust metal construction.

### VARIABLE DOSE ADJUSTMENT

Allows easy, flexible dose.

### ERGONOMIC DESIGN

Provides comfortable grip, tactile feedback and reduced fatigue over extended periods of time.

### CHEMICAL RESISTANT

Highly chemical resistant cylinder with moulded graduations.



Small 'thick' nozzle designed specifically for lambs.

KIT CODE	BARREL SIZE	FILL TYPE	DOSE RANGE	DOSE INCREMENTS	DOSE TYPE (SEE PAGE 23)	KIT CONTENTS	KIT REF
850 0003-962	8 mL	Tube Fed	0.5 - 8 mL	n/a	Variable Dose Stops	1x Metal Device with 80 mm Metal Nozzle, 1x 9.6 x 1500mm Feed Tube, 2x Feed Tube Springs, 6x O-Rings, 6x Washers, 1x Lubricant	Spare Parts: 27 Accessories: 10, 11, 12, 13

## 60 mL Metal Oral Drencher



### HIGHLY DURABLE

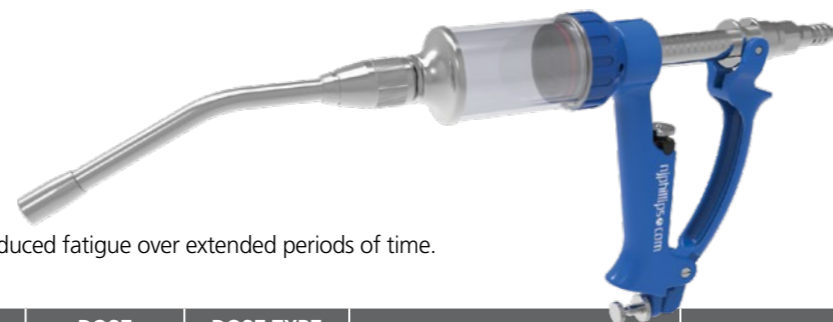
Designed using high quality materials.

### VARIABLE DOSE ADJUSTMENT

Allows easy, flexible larger doses.

### ERGONOMIC DESIGN

Provides comfortable grip, tactile feedback and reduced fatigue over extended periods of time.



KIT CODE	BARREL SIZE	FILL TYPE	DOSE RANGE	DOSE INCREMENTS	DOSE TYPE (SEE PAGE 23)	KIT CONTENTS	KIT REF
850 0003-960	60 mL	Tube Fed	5 - 60 mL	n/a	Variable Dose Stops	1x Metal Device with 150 mm Metal Nozzle, 1x 9.6 x 1500mm Feed-Tube, 2x Feed-Tube Springs, 1x Feed-Tube Adaptor Kit, 3x O-Rings, 3x Spare Washers, 1x Lubricant	Spare Parts: 30 Accessories: 10, 11, 13

## Magnum Pour-On Applicator



Accurate, smooth actioned administration of pour-on and oral product.

### ANGLED NOZZLE

For better visibility upon application.

### QUICK REFILL

With SoftLock technology, reducing post-delivery spurt.

### EASY BARREL REMOVAL SYSTEM

For cleaning and lubricating.



KIT CODE	BARREL SIZE	FILL TYPE	DOSE RANGE	DOSE INCREMENTS	DOSE TYPE	KIT CONTENTS	KIT REF
850 0000-380	70 mL	Tube Fed	10 - 70 mL	2.5 mL Dose Increments	24 Selectable Dose Stops	1x Device, 1x Shower Nozzle, 1x 9.5 x 1250mm Feed Tube, 2x Anti-Kink Springs, 3x O-Rings, 3x Felt Washers	Spare Parts: n/a Accessories: 10, 11, 13



# Accessories



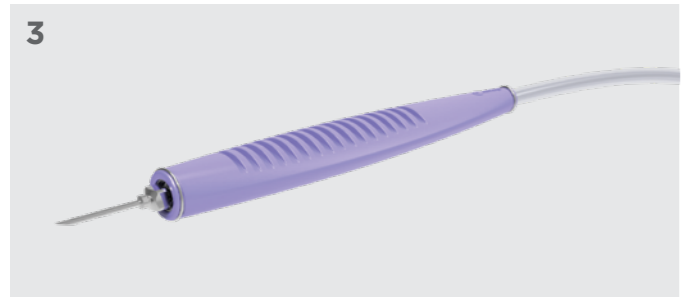
## Injector Draw-Off Accessory Kit

**Kit Code:** 850 0000-405  
**Kit Contents:** 1x 4.7 x 1220mm Feed Tube, 1x 6.4 x 1200mm Feed Tube, 3x Draw-offs (Small, Medium, Large)  
**Compatible with:** All Simcro and NJ Phillips Tube Fed injectors.



## Bottle Mount Injector Attachment Kit

**Kit Code:** 850 0000-399  
**Kit Contents:** 1x 20mm Bottle Collar, 1x 30mm Bottle Collar, 1x 100 mL Bottle Shroud  
**Compatible with:** All Simcro Bottle Mount Injectors.



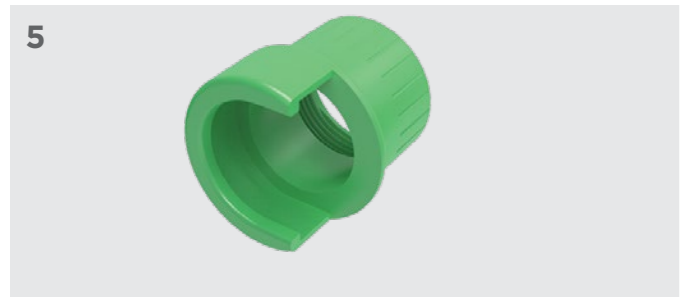
## Handi-ject Injector Attachment

**Kit Code:** 850 0000-409  
**Kit Contents:** 1x Handi-Ject (1000 mm tube)  
**Compatible with:** All Simcro and NJ Phillips Tube Fed injectors.



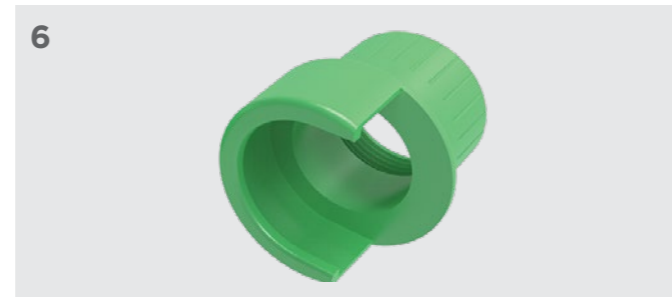
## Repeater Coloured Knobs

**Kit Code:** 850 0003-990  
**Kit Contents:** 4x Coloured knobs (yellow, red, blue, orange)  
**Compatible with:** Pistol Grip and Ezi-Grip Repeaters.



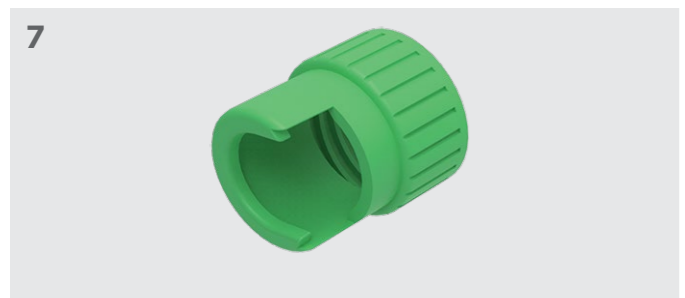
## Ultimate BMV™ 30 mm Cap

**Kit Code:** 850 0000-400  
**Kit Contents:** 1x UBMV 30 mm Cap  
**Compatible with:** 2 mL and 6 mL Ultimate BMV™ Bottle Mount Injectors.



## Ultimate BMV™ 33 mm Cap

**Kit Code:** 850 0000-402  
**Kit Contents:** 1x UBMV 33 mm Cap  
**Compatible with:** 2 mL and 6 mL Ultimate BMV™ Bottle Mount Injectors.



## BMV™ 33 mm Cap

**Kit Code:** 850 0000-401  
**Kit Contents:** 1x BMV™ 33 mm Cap  
**Compatible with:** 0.5 mL and 2 mL BMV™ Bottle Mount Injectors.



## BMV™ 100 mL Bottle Shroud

**Kit Code:** 850 0000-453  
**Kit Contents:** 1x BMV™ 100 mL Bottle Shroud  
**Compatible with:** 0.5 mL and 2 mL BMV™ Bottle Mount Injectors.



## Floating Hook Applicator Attachment

**Kit Code:** 850 0000-408  
**Kit Contents:** 1x 714 mm Hook Nozzle, 1x 9.5 x 1500mm Feed Tube, 1x Adaptor, 2x Anti-Kink Springs  
**Compatible with:** 15 - 30 mL Simcro Applicator.



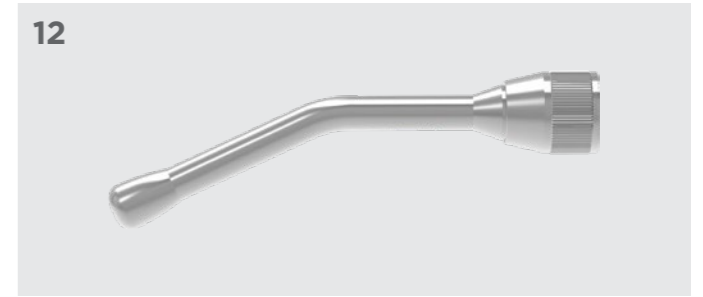
## 5 L Flexipack Backpack

**Kit Code:** 850 0000-398  
**Kit Contents:** 1x 5 L Flexible Backpack, 1x 38mm Closure Cap, 1x 38mm Dual Spigot Cap, 1x PVC Dispensing Cap Tube, 1x Backpack Strap  
**Compatible with:** All Applicators.



## 2.5 L Rigid Backpack

**Kit Code:** 850 0003-997  
**Kit Contents:** 1x 2.5 L Rigid Backpack, 1x Air Bleed Upright Draw Off Cap, 1x Black Travel Cap, 2x Straps.  
**Compatible with:** All applicators.



## Sheep Nozzle

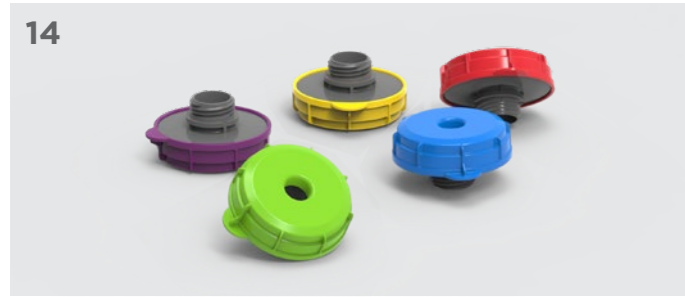
**Kit Code:** 850 0004-026  
**Kit Contents:** 1x 90mm Sheep Nozzle, 1x Nut, 1x Seal Ring.  
**Compatible with:** 20 mL Metal Oral Drencher and 8mL Metal Lamb Drencher.



## Applicator and Injector Lubricant

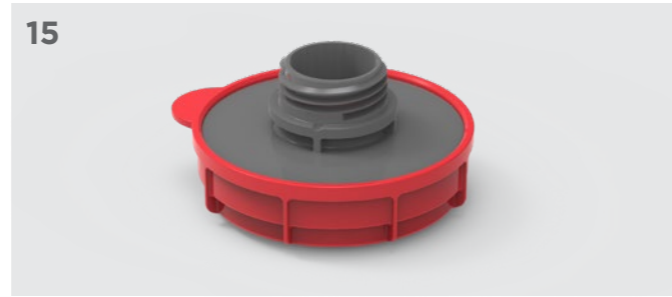
**Kit Code:** 850 0004-027  
**Kit Contents:** 2x bottles of lubricant.  
**Compatible with:** All applicators and injectors.

# VS Injector Accessories



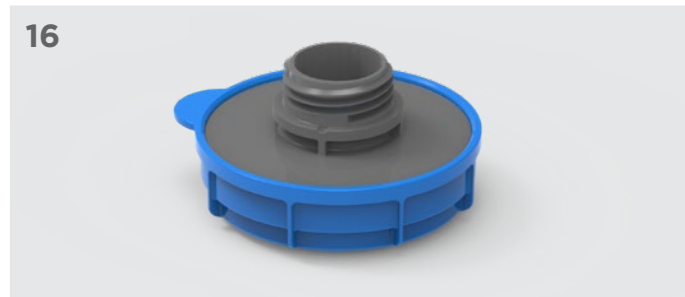
## VS Injector Ink Stamps -Multi Coloured Pack (5/pk)

**Kit Code:** 850 0004-304  
**Kit Contents:** 5 x VS Injector Ink Stamps (1x Red, 1x Blue, 1x Green, 1x Purple, 1x Yellow)  
**Compatible with:** All VS Injectors



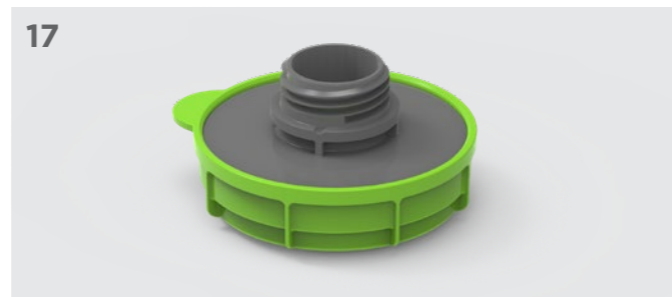
## VS Injector Ink Stamps -Red (5/pk)

**Kit Code:** 850 0004-299  
**Kit Contents:** 5 x VS Injector Ink Stamps (Red)  
**Compatible with:** All VS Injectors



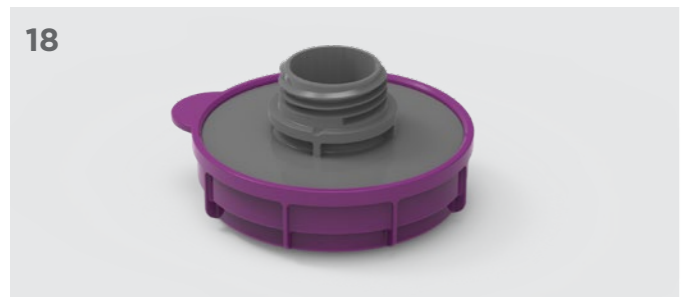
## VS Injector Ink Stamps -Blue(5/pk)

**Kit Code:** 850 0004-300  
**Kit Contents:** 5 x VS Injector Ink Stamps (Blue)  
**Compatible with:** All VS Injectors



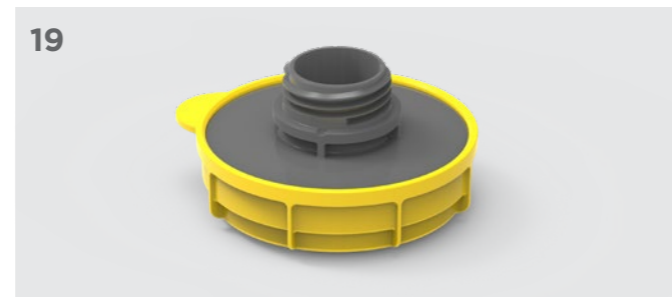
## VS Injector Ink Stamps -Green(5/pk)

**Kit Code:** 850 0004-301  
**Kit Contents:** 5 x VS Injector Ink Stamps (Green)  
**Compatible with:** All VS Injectors



## VS Injector Ink Stamp -Purple (5/pk)

**Kit Code:** 850 0004-302  
**Kit Contents:** 5 x VS Injector Ink Stamps (Purple)  
**Compatible with:** All VS Injectors



## VS Injector Ink Stamp -Yellow (5/pk)

**Kit Code:** 850 0004-303  
**Kit Contents:** 5 x VS Injector Ink Stamps (Yellow)  
**Compatible with:** All VS Injectors

# GUARDED INJECTORS



## 2 ML SEKURUS™ BOTTLE MOUNT INJECTOR SPARE PARTS KIT

**Kit Code:** 850 0000-388  
**Kit Contents:** 1x 2 mL Barrel, 1x Perpendicular Needle Guard, 5x O-Rings  
**Compatible with:** 2 mL Sekurus™ Bottle Mount Injector.



## 5 ML ACCURUS TUBE FED INJECTOR SPARE PARTS KIT

**Kit Code:** 850 0000-392  
**Kit Contents:** 1x 12 mL Barrel, 1x Self-Tenting Needle Guard, 5x O-Rings  
**Compatible with:** 5 mL Accurus Forward Selectable Tube Fed Injector.



## 6 ML ACCURUS BOTTLE MOUNT INJECTOR SPARE PARTS KIT

**Kit Code:** 850 0000-389  
**Kit Contents:** 1x 6 mL Barrel, 1x Self-Tenting Needle Guard, 5x O-Rings  
**Compatible with:** 6 mL Accurus Bottle Mount Injector.



## 12 ML ACCURUS TUBE FED INJECTOR SPARE PARTS KIT

**Kit Code:** 850 0000-394  
**Kit Contents:** 1x 12 mL Barrel, 1x Self-Tenting Needle Guard, 5x O-Rings, 5x Felt Washers  
**Compatible with:** 12 mL Accurus Tube Fed Injector.

# REPEATERS



## 25 ML REPEATER MINOR SERVICE KIT

**Kit Code:** 850 0003-992  
**Kit Contents:** 5x O-Rings  
**Compatible with:** 25 mL Pistol Grip and Ezi-Grip Repeaters.



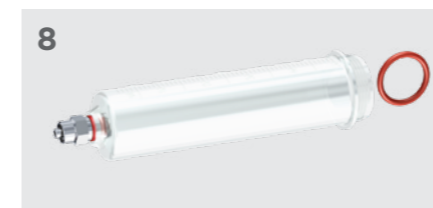
## 50 ML REPEATER MINOR SERVICE KIT

**Kit Code:** 850 0003-991  
**Kit Contents:** 5x O-Rings  
**Compatible with:** 50 mL Pistol Grip and Ezi-Grip Repeaters.



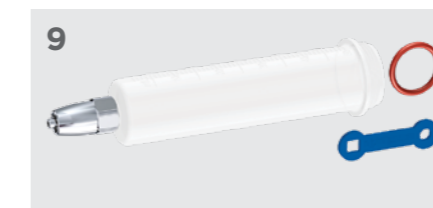
## 25 ML REPEATER POLYPROPYLENE BARREL MAJOR SERVICE KIT

**Kit Code:** 850 0003-995  
**Kit Contents:** 1x 25 mL Polypropylene Barrel with Metal Needle Luer, 1x O-Ring, 1x Needle Hub Spanner  
**Compatible with:** 25 mL Pistol Grip and Ezi-Grip Repeaters.



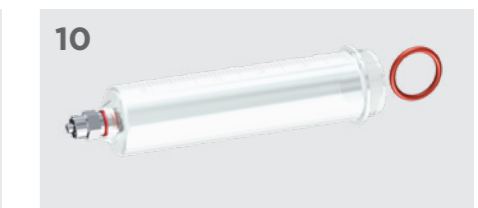
## 25 ML REPEATER POLYSULFONE BARREL MAJOR SERVICE KIT

**Kit Code:** 850 0004-000  
**Kit Contents:** 1x 25 mL Polysulfone Barrel with Metal Needle Luer, 1x O-Ring,  
**Compatible with:** 25 mL Pistol Grip and Ezi-Grip Repeaters.



## 50 ML REPEATER POLYPROPYLENE BARREL MAJOR SERVICE KIT

**Kit Code:** 850 0003-994  
**Kit Contents:** 1x 50 mL Polypropylene Barrel with Metal Needle Luer, 1x O-Ring, 1x Needle Hub Spanner  
**Compatible with:** 50 mL Pistol Grip and Ezi-Grip Repeaters.



## 50 ML REPEATER POLYSULFONE BARREL MAJOR SERVICE KIT

**Kit Code:** 850 0003-986  
**Kit Contents:** 1x 50 mL Polysulfone Barrel with Metal Needle Luer, 1x O-Ring,  
**Compatible with:** 50 mL Pistol Grip and Ezi-Grip Repeaters.

## TUBE FED INJECTORS



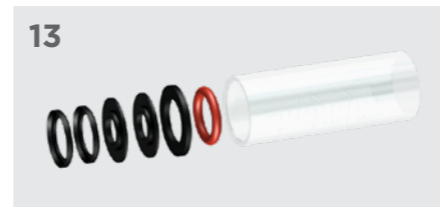
### 0.5 ML POULTRY INJECTOR MAJOR SERVICE KIT

**Kit Code:** 850 0003-989  
**Kit Contents:** 1x 0.5 mL Barrel, 4x O-Rings, 2x Valves and Springs  
**Compatible with:** 0.5 mL Automatic Poultry Injector.



### 2 ML AUTOMATIC TUBE FED & BOTTLE MOUNT INJECTOR MAJOR SERVICE KIT

**Kit Code:** 850 0003-999  
**Kit Contents:** 1x 2 mL Barrel, 3x Valves and Springs, 1x Return Spring, 6x O-Rings  
**Compatible with:** 2 mL Automatic Tube Fed Injector and 2 mL Automatic Bottle Mount Injector.



### 5 ML AUTOMATIC TUBE FED INJECTOR MAJOR SERVICE KIT

**Kit Code:** 850 0003-987  
**Kit Contents:** 1x 5 mL Barrel, 1x O-Ring, 5x Washers  
**Compatible with:** 5 mL Automatic Tube Fed Injector.



### 2 ML PREMIUM INJECTOR SPARE PARTS KIT

**Kit Code:** 850 0000-391  
**Kit Contents:** 1x 2 mL Barrel, 5x O-Rings  
**Compatible with:** 2 mL Premium Tube Fed Injector.



### 5 ML PREMIUM FORWARD SELECTABLE INJECTOR SPARE PARTS KIT

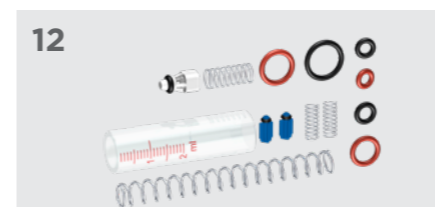
**Kit Code:** 850 0000-393  
**Kit Contents:** 1x 5 mL Barrel, 5x O-Rings  
**Compatible with:** 5 mL Premium Tube Fed Forward Selectable Injector.



### 12 ML PREMIUM HI-VISCOSITY INJECTOR SPARE PARTS KIT

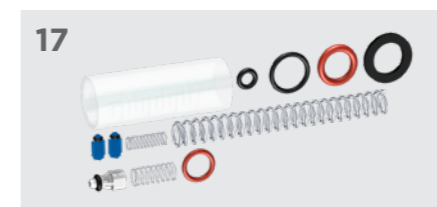
**Kit Code:** 850 0000-397  
**Kit Contents:** 1x 12 mL Barrel, 5x O-Rings, 5x Felt Washers  
**Compatible with:** 12 mL Premium Tube Fed Hi-Viscosity Injector.

## BOTTLE MOUNT INJECTORS



### 2 ML AUTOMATIC TUBE FED & BOTTLE MOUNT INJECTOR MAJOR SERVICE KIT

**Kit Code:** 850 0003-999  
**Kit Contents:** See Page 16.  
**Compatible with:** 2 mL Automatic Tube Fed Injector and 2 mL Automatic Bottle Mount Injector.



### 5 ML AUTOMATIC BOTTLE MOUNT INJECTOR MAJOR SERVICE KIT

**Kit Code:** 850 0004-024  
**Kit Contents:** 1x 5 mL Barrel, 1x O-Ring, 5x Washers  
**Compatible with:** 5 mL Automatic Bottle Mount Injector.



### 0.5 ML PREMIUM BOTTLE MOUNT FORWARD SELECTABLE INJECTOR SPARE PARTS KIT

**Kit Code:** 850 0000-386  
**Kit Contents:** 1x 0.5 mL Forward Selectable Barrel, 5x O-Rings  
**Compatible with:** 0.5 mL Premium Bottle Mount Forward Selectable Injector.



### 2 ML PREMIUM BOTTLE MOUNT FORWARD SELECTABLE INJECTOR SPARE PARTS KIT

**Kit Code:** 850 0000-387  
**Kit Contents:** 1x 2 mL Barrel, 1x Self-Tenting Needle Guard, 5x O-Rings  
**Compatible with:** 2 mL Premium Bottle Mount Forward Selectable Injector.



### 6 ML PREMIUM BOTTLE MOUNT INJECTOR SPARE PARTS KIT

**Kit Code:** 850 0000-390  
**Kit Contents:** 1x 6 mL Barrel, 5x O-Rings  
**Compatible with:** 6 mL Premium Bottle Mount Injector.



### 2 ML ULTIMATE BMV™ BOTTLE MOUNT INJECTOR SPARE PARTS KIT

**Kit Code:** 850 0000-454  
**Kit Contents:** 1x 2 mL Barrel, 1x 100 mL Shroud  
**Compatible with:** 2 mL Ultimate BMV™ Bottle Mount Injector.



### 6 ML ULTIMATE BMV™ BOTTLE MOUNT INJECTOR SPARE PARTS KIT

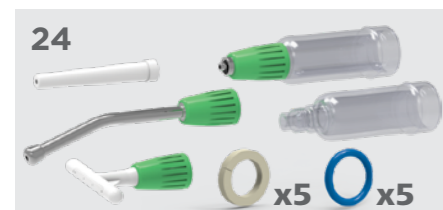
**Kit Code:** 850 0000-449  
**Kit Contents:** 1x 6 mL Barrel, 1x 100 mL Shroud  
**Compatible with:** 6 mL Ultimate BMV™ Bottle Mount Injector.



### 0.5 ML BMV™ BOTTLE MOUNT INJECTOR SPARE PARTS KIT

**Kit Code:** 850 0000-447  
**Kit Contents:** 1x 0.5 mL Barrel, 1x 100 mL Shroud  
**Compatible with:** 0.5 mL BMV™ Bottle Mount Injector.

**MULTI-PURPOSE DEVICE**



**24**  
**15 ML OPTIMISER™ SPARE PARTS KIT**  
**Kit Code:** 850 0000-396  
**Kit Contents:** 5x O-Rings, 5x Felt Washers, 1x 15 mL Drench Barrel, 1x 15 mL Injector Barrel, 1x 86 mm Metal Oral Drench Nozzle, 1x 57 mm Straight Plastic Nozzle, 1x T-Bar Pour-on Nozzle  
**Compatible with:** 15 mL Optimiser™ Multi Kit.

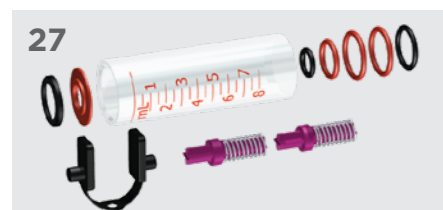


**25**  
**20 ML APPLICATOR ORAL AND POUR-ON SPARE PARTS KIT**  
**Kit Code:** 850 0000-384  
**Kit Contents:** 1x 20 mL Barrel, 1x 100 mm Metal Oral Nozzle, 1x Kinked Rose Nozzle, 5x O-Rings, 5x Felt Washers  
**Compatible with:** 20 mL Oral & Pour-On Applicator.



**26**  
**30 ML APPLICATOR ORAL AND POUR-ON SPARE PARTS KIT**  
**Kit Code:** 850 0000-385  
**Kit Contents:** 1x 30 mL Barrel, 1x 100 mm Metal Oral Nozzle, 1x Kinked Rose Nozzle, 5x O-Rings, 5x Felt Washers  
**Compatible with:** 30 mL Oral & Pour-On Applicator.

**APPLICATORS**



**27**  
**8 ML ORAL LAMB DRENCHER MAJOR SERVICE KIT**  
**Kit Code:** 850 0003-996  
**Kit Contents:** 1x 8 mL Barrel, 2x Valves & Springs, 1x Lever Pad, 5x O-Rings, 2x Washers  
**Compatible with:** 8 mL Oral Lamb Drencher.



**28**  
**20 ML ORAL DRENCHER MINOR SERVICE KIT**  
**Kit Code:** 850 0004-025  
**Kit Contents:** 5x O-Rings, 2x Valves & Springs, 1x Return Spring, 1x Piston, 1x Lever Pad, 1x CirClip, 1x Lubricant, 1x Lubricating Washer  
**Compatible with:** 20 mL Oral Drencher.



**29**  
**20 ML ORAL DRENCHER MAJOR SERVICE KIT**  
**Kit Code:** 850 0003-993  
**Kit Contents:** 5x O-Rings, 2x Valves & Springs, 1x Return Spring, 1x Piston, 1x Lever Pad, 1x CirClip, 1x Lubricant, 1x Lubricating Washer, 1x Cylinder, 1x Pushrod Guide  
**Compatible with:** 20 mL Oral Drencher.



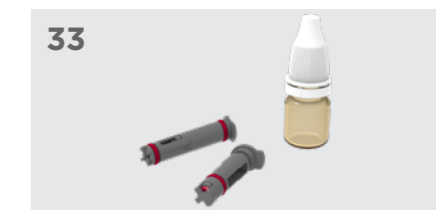
**30**  
**60 ML ORAL DRENCHER MAJOR SERVICE KIT**  
**Kit Code:** 850 0003-988  
**Kit Contents:** 1x 60 mL Barrel, 2x Valves & Springs, 1x Inlet Valve, 1x Piston Head  
**Compatible with:** 60 mL Oral Drencher.



**31**  
**NON-NEEDLE GUARD ASSEMBLY**  
**Kit Code:** 850 0004-140  
**Kit Contents:** 1 x Non-Needle Guard Assembly  
**Compatible with:** All VS Injectors



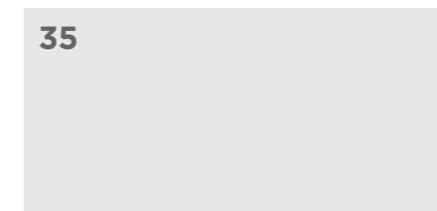
**32**  
**VS INJECTOR VALVE ASSEMBLY KIT - 1.1 ML - 5.0 ML**  
**Kit Code:** 850 0004-139  
**Kit Contents:** 2 x Valve Assembly, 1 x Lubricant  
**Compatible with:** 2mL and 5mL VS Injectors



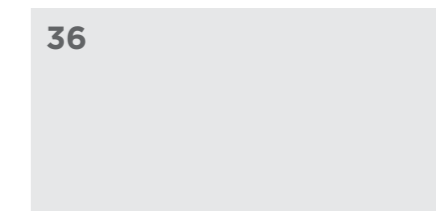
**33**  
**VS INJECTOR VALVE ASSEMBLY KIT - 0.1 ML - 1.0 ML**  
**Kit Code:** 850 0004-138  
**Kit Contents:** 2 x Valve Assembly, 1 x Lubricant  
**Compatible with:** 0.5 mL and 1 mL VS Injectors



**34**  
**BOTTLE MOUNT ASSEMBLY**  
**Kit Code:** 850 0004-142  
**Kit Contents:** 1 x Bottle Mount Assembly  
**Compatible with:** All VS Injectors



**35**  
**1" NEEDLE GUARD ASSEMBLY**  
**Kit Code:** 850 0004-315  
**Kit Contents:** 1 x 1" Needle Guard Assembly  
**Compatible with:** All VS Injectors



**36**  
**1.5" NEEDLE GUARD ASSEMBLY**  
**Kit Code:** 850 0004-316  
**Kit Contents:** 1 x 1.5" Needle Guard Assembly  
**Compatible with:** All VS Injectors



**37**  
**NEEDLE GUARD FRONT CAP**  
**Kit Code:** 850 0004-317  
**Kit Contents:** 1 x Needle Guard Front Cap  
**Compatible with:** All VS Injectors



**38**  
**COLOURED RING - RED (5/PK)**  
**Kit Code:** 850 0004-318  
**Kit Contents:** 5 x Coloured Ring - Red  
**Compatible with:** All VS Injectors



**39**  
**COLOURED RING - GREEN (5/PK)**  
**Kit Code:** 850 0004-319  
**Kit Contents:** 5 x Coloured Ring - Green  
**Compatible with:** All VS Injectors



**40**  
**COLOURED RING - YELLOW (5/PK)**  
**Kit Code:** 850 0004-320  
**Kit Contents:** 5 x Coloured Ring - Yellow  
**Compatible with:** All VS Injectors



**41**  
**COLOURED RING - BLUE (5/PK)**  
**Kit Code:** 850 0004-321  
**Kit Contents:** 5 x Coloured Ring - Blue  
**Compatible with:** All VS Injectors

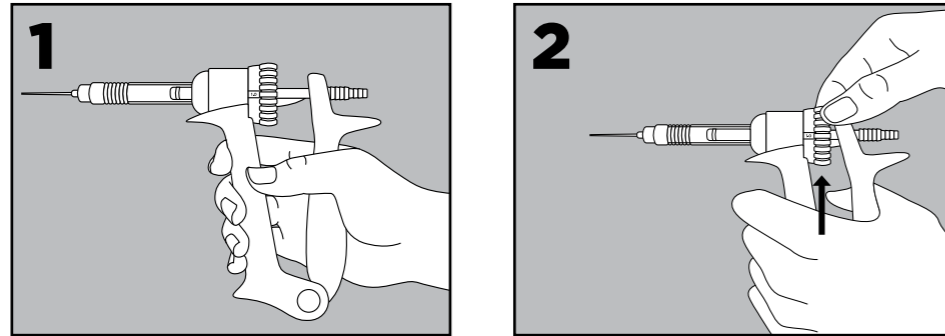


**42**  
**COLOURED RING - ORANGE (5/PK)**  
**Kit Code:** 850 0004-322  
**Kit Contents:** 5 x Coloured Ring - Orange  
**Compatible with:** All VS Injectors

# Dose Selection Types

## FIXED

- (1) Device has one fixed dose option printed on the indicator window.
- (2) Dose selector is present on the device but cannot be moved.



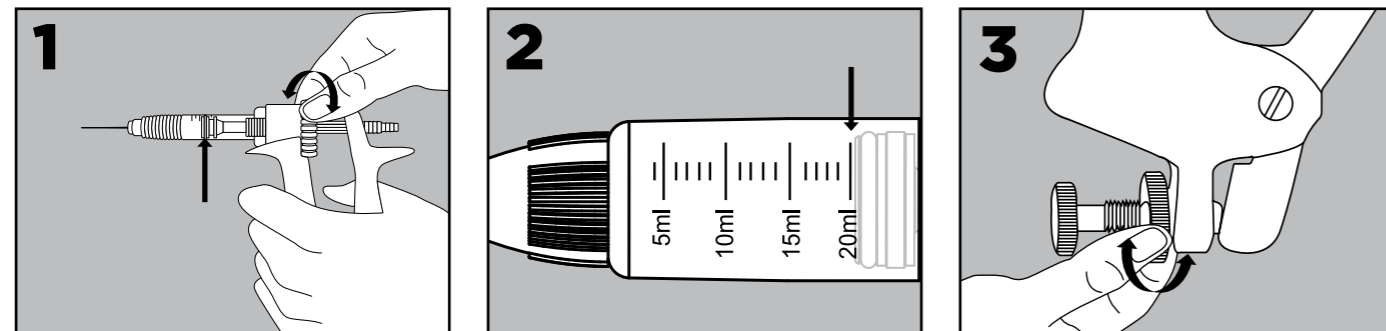
## VARIABLE

The non-slip selector allows easy, accurate dose choice, and flexible dose adjustment. Variable dose selection can be fine tuned against the front of plunger and dose indication markings on barrel (unless otherwise stated on the device).

**To Set Dose** - Turn the dose selector clockwise or anti-clockwise until the front of the plunger is set at the required dose indicated on the barrel (Simcro (1 & 2)).

For NJ Phillips (except 60 mL Drencher): Release the lock nut, screw the dose adjuster until the front of the piston lines up with the dose increments on the cylinder, then retighten the lock nut (3).

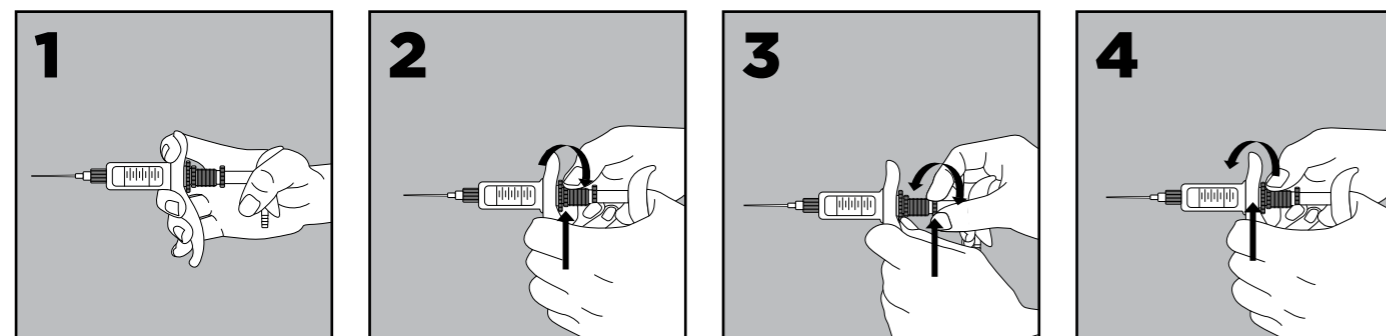
For 60 mL Drencher: Release the lock nut, push rod increments to align with the push rod guide, then retighten the lock nut.



## VARIABLE LOCK NUT (NJ PHILLIPS)

The non-slip selector allows easy, accurate dose choice, and flexible dose adjustment. Variable nut lock dose selection can be fine tuned against the front of plunger and dose indication markings on barrel (unless otherwise stated on the device).

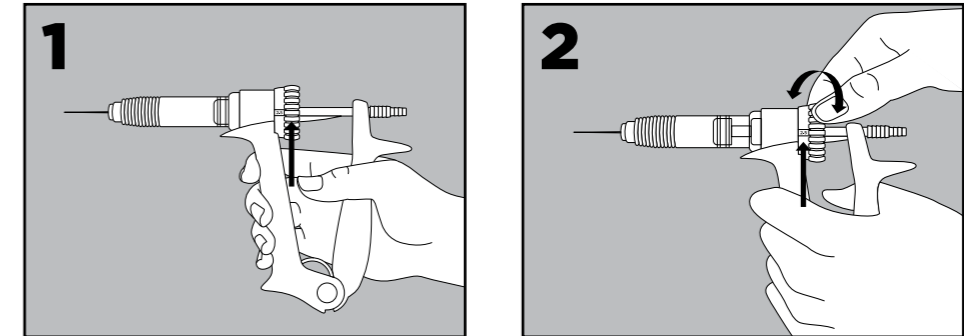
**To Set Dose** - Turn the nut lock anti-clockwise (2), then turn the dose selector clockwise or anti-clockwise until the front of the plunger is set at the required dose indicated on the barrel (3). Turn nut lock clockwise to secure dose setting (4).



## REVERSE SELECTABLE

The non-slip selector allows easy, accurate dose choice, without product loss when changing the dose setting. The indicator window clearly displays the dose volume. When dose is selected the plunger will remain at the back on the barrel.

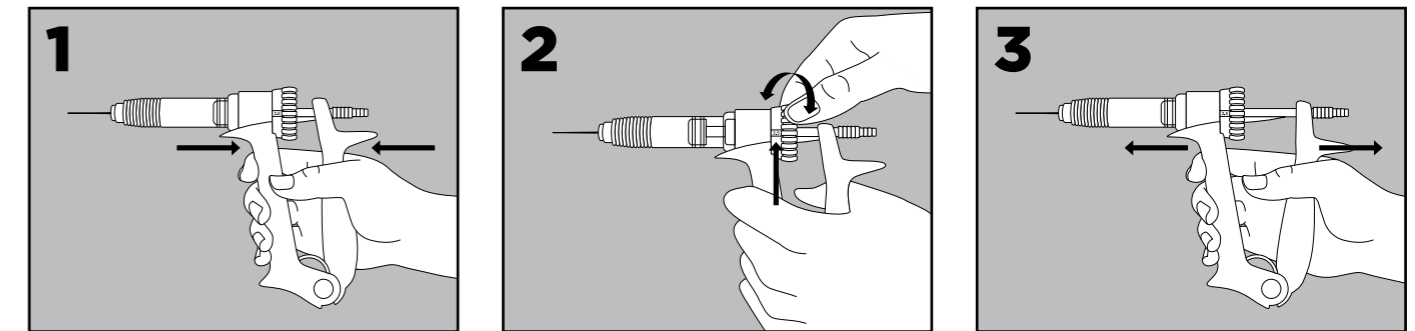
**To Set Dose** - Turn the dose selector (1) clockwise or anti-clockwise until the required dose appears in the dose window (2).



## FORWARD SELECTABLE

The non-slip selector allows easy, accurate dose choice when changing the dose setting. Product loss can be avoided provided the handle is not released after previous dose administered. The indicator window clearly displays the dose volume. When smaller dose sizes are selected the plunger will move further forward along the barrel.

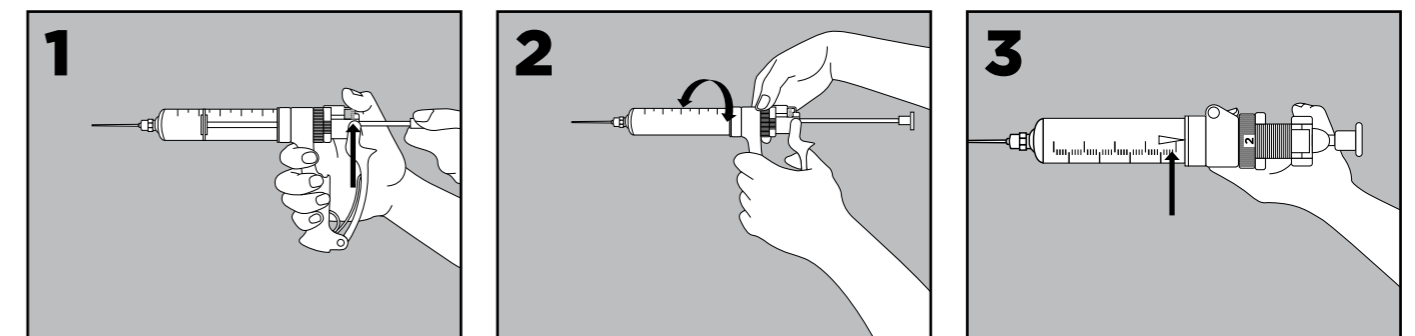
**To Set Dose** - Compress the injector handles (1). To set dose, turn the dose selector clockwise or anti-clockwise until the required dose appears in the dose window (2). Once required dose is displayed in the dose window, let the injector handles open as normal (3).



## REPEATERS

Devices have a dial that can be adjusted to pre-set dose sizes, the plunger moves towards the end of the barrel with each dose administered, until the barrel is empty, at which point the user refills the barrel.

**To Set Dose** - Press the button on top of the device, the spring under the button needs to be fully compressed, then pull the barrel plunger to the back of the barrel (1). Turn the dose selector clockwise or anti-clockwise (2) until the required dose is aligned to the arrow at the top of the device (3).



**DATAMARS**  
***Livestock***<sup>TM</sup>

**Datamars SA**

Via Industria 16  
6814 Lamone, Switzerland  
Phone: +41 91 935 73 80  
Fax: +41 91 945 03 30  
EMAIL AHDSinfo@datamars.com

**livestock.datamars.com**  
**www.simcro.com**  
**www.njphillips.com**